



WATER SANDER WS-C1

～ Pneumatic Chamfering Machine ～

The **industry's first** Pneumatic Wet Chamfering machine

A chamfering machine of the edge of kitchen countertop can be introduced **at an affordable cost**.

No special skills are required, anybody can easily perform chamfering.

Both **flat surface** machining and **R-chamfering** are available.

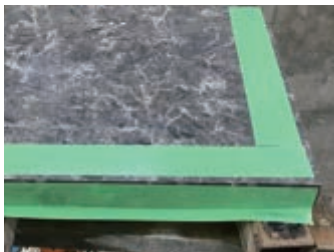


flat surface

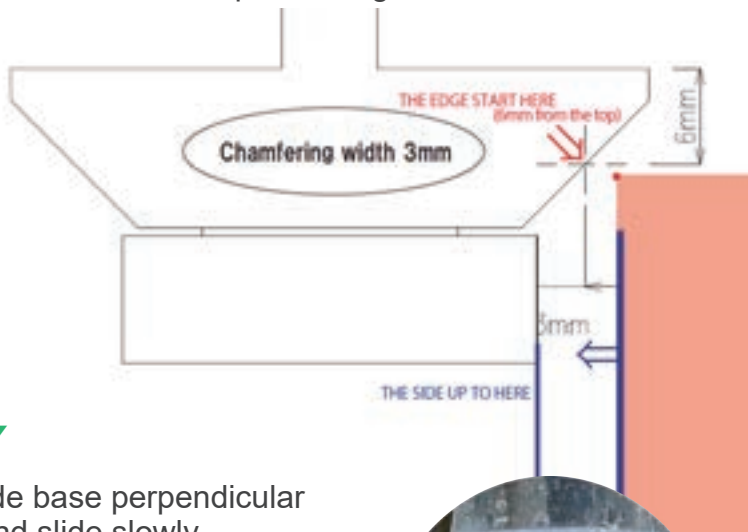
R-chamfering

How to use WS-C1:

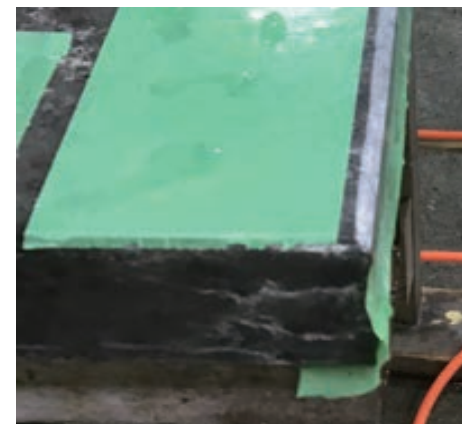
1. Put on masking tape.



2. Change the position of the mounted beveler depending on the width of the processing surface.



3. Place the guide base perpendicular to the edge and slide slowly.



Specifications:

Rotation Speed	18000r.p.m.
Max Working Pressure	0.4~0.6Mpa・80PSI
Air Consumption	16CFM・450L/Min
Output	0.24KW
Compressor	3.76KW (5.0HP)
Weight	1.05kg
Collet size	6φ

Direction
for use
As Video





Q & A:

Q. When will it be released?

A. It was supposed to be released last December. We are reproducing the mold due to low dimensional accuracy of the opening of the PC part of the main body base. Therefore, the release date will be after April.

Q. What is the product' s feature?

A. The WS-C1 is specialize in chamfering kitchen counters.

Conventionally, chamfering kitchen counters required either hand work by a skilled craftsman or an expensive automatic machine. However, by using the WS-C1, anybody can easily perform chamfering (flat chamfering) and radius (rounding surface).

Q. Can it be used chamfering radius?

A. It is possible to create rounding surface. Polishing is currently under development.

Q. Is chamfering available to all kind of stone / tile?

A. Both chamfering and polishing are available on natural stone and ceramic tiles. However, some burning problem occurs when polishing artificial marble which contains a lot of resin. Please take a test polishing before use.

Q. What is the width of chamfering?

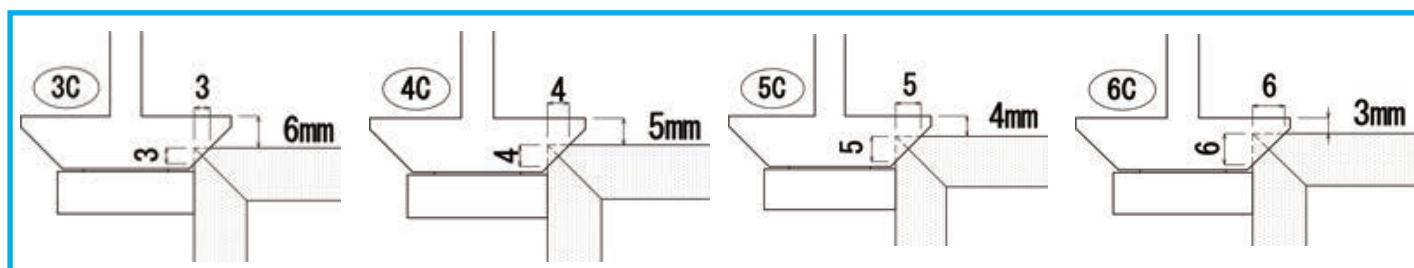
A. Chamfering width is 2mm up to 5mm. (6mm on calculations) Any further width will be made to order.

Q. What is the width of radius chamfering?

A. Polishing can not be used. Chamfering width 3R and 5R is available. Any further width will be made to order.

Q. How to set up the width range from 2mm up to 5mm?

A. Please see the table below. By setting up at 7mm from the top of the exclusive Dia, chamfering width 2mm can be achieved. At 6mm from the top, chamfering width 3mm, at 5mm, chamfering width 4mm, at 4mm, chamfering width 5mm. Please see the following table.



Q. How long is the Mounted beveler' s life span?

A. We don' t have accurate data, because it depends on materials. We are currently under testing and will share further information as we found out.

