



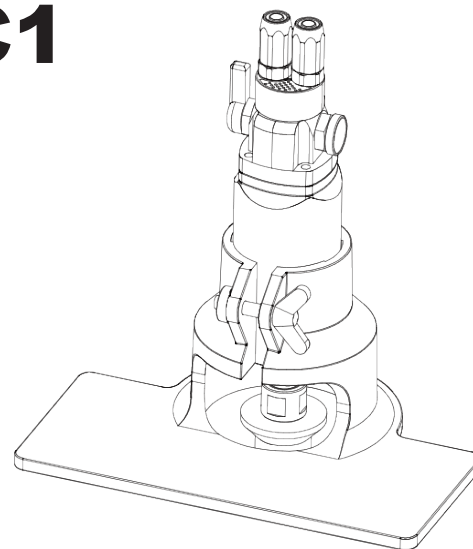
WATER SANDER WS-C1

~ Pneumatic Chamfering Machine ~

The **industry's first** Pneumatic Wet Chamfering machine
A chamfering machine of the edge of kitchen countertop can
be introduced **at an affordable cost**

No special skills are required, anybody can easily perform
chamfering.

By simply setting up the machine at first, anyone can easily
perform chamfering task without special skills.



Special features:

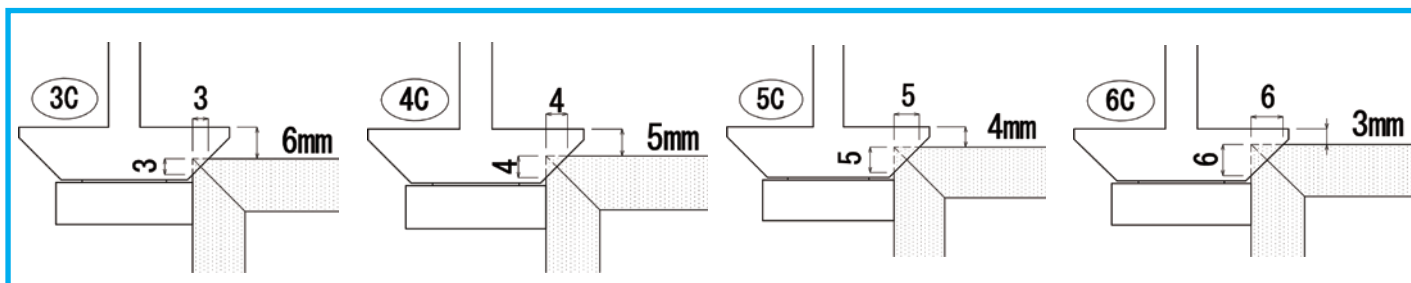
1. Chamfering at a 45-degree angle (from 2C to a maximum of 6C) can be easily processed.
2. R-surface processing can also be done easily.

How to use WS-C1:

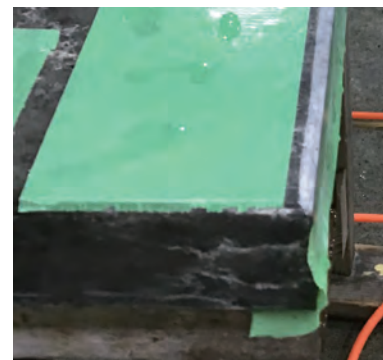
1. Put on masking tape.



2. Change the position of the mounted beveler depending on the width
of the processing surface.



3. Place the guide base perpendicular
to the edge and slide slowly.



Specifications:

Rotation Speed	18000r.p.m.
Max Working Pressure	0.4~0.6Mpa•80PSI
Air Consumption	16CFM•450L/Min
Output	0.24KW
Compressor	3.76KW (5.0HP)
Weight	1.05kg
Collet size	6φ

Direction
for use
As Video





MOUNTED BEVELER

～ Special specification is developed exclusively for WS-C1 ～

For flat surface machining:

Chamfering at a 45-degree angle (from 2C to a maximum of 6C) can be easily processed.
This can be done in 3 steps. After that, using AKEMI's transformer can achieve a beautiful finish.

For R-surface chamfering:

Available with Rounding radius 3R, 5R

Type: Chamfer angle 45°
Grit : 1 / 2 / 3



Type : Rounding radius
R3 / R5



Q & A:

Q.1 When will it be released?

A.1 November 2024

Q.2 Can it be machined into R shape?

A.2 It is possible to machine it into R shape. The polishing process is currently under development.

Q.3 Is chamfering available to all kind of stone / tile?

A.3 Both chamfering and polishing are available on natural stone and ceramic tiles.
However a problem occurs when polishing artificial marble which contains a lot of resin.
Please take a test polishing before use.

Q.4 What is the width of chamfering ?

A.4 Chamfering width is 2 mm up to 5 mm. (6 mm on calculations) Any further width will be made to order.

Q.5 What is the width of radius chamfering ?

A.5 Polishing can not be used. Chamfering width 3 R and 5 R is available. Any further width will be made to order.

Q.6 How to set up the width range from 2 mm up to 5 mm ?

A.6 Please see the table below. By setting up at 7 mm from the top of the exclusive Dia,
Chamfering width 2 mm can be achieved. Please see the following table.

Chamfering Width	Width from the Top
3 mm	6 mm
4 mm	5 mm
5 mm	4 mm
6 mm	3 mm

