



WATER SANDER WS-C1

Patent Pending

~ Pneumatic wet chamfering machine ~

The chamfering a countertop requires highly skilled craftsmen. However, fewer and fewer craftsmen can cut an accurate 45-degree chamfer without changing the width of the surface. If using the WS-C1, it can be chamfered easily and beautifully, and no skilled craftsman is needed.

Coming Soon

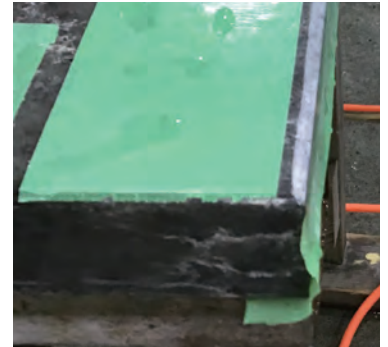


PRODUCT INFORMATION

Rotation Speed	17200r.p.m.
Max Working Pressure	0.4~0.6Mpa•80PSI
Air Consumption	16CFM•450L/Min
Output	0.24KW
Compressor	3.76KW (5.0HP)
Weight	1.05kg
Collet size	6φ

Direction for use

1. Protect the surface against scratches with the adhesive tape.
2. Attach the trimmer bit head to the WS-C1, move its body up and down the width of the chamfer, and firmly secure it.
3. Chamfer the countertop with the WS-C1.
4. Polish the chamfered part with a flexible diamond pad, etc.
5. Apply the Akemi transformer product to finish.



Trimmer bit for WS-C1

~ Electric trimmer bit Dia Cone ~



Type: 45degrees
Grit : #100
Head diameter : 26 mm
Shank diameter : 6 mm
Head length : 12 mm

Trimmer bit 45 degrees is used for chamfer-crossing, and it is specially designed for WS-C1. It is suitable for granite, natural marble, artificial marble, and techno-ceramic.

Direction for use
As Video



~ Electric trimmer bit Dia R ~



Type: Round face
Grit : #100
Head diameter : 18 mm
Shank diameter : 6 mm
Head length : 11 mm

Trimmer bit R6 degrees is used for round chamfer, and it is specially designed for WS-C1. It is suitable for granite, natural marble, artificial marble, and techno-ceramic.

