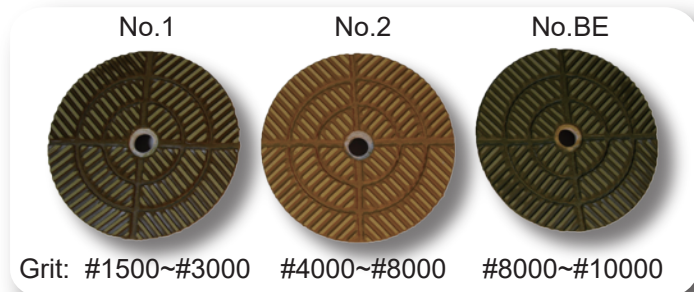


# Super Series

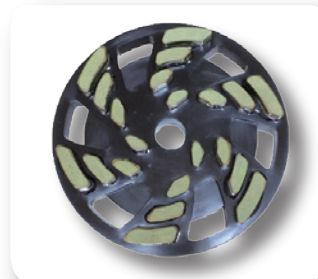
## ***SUPER FLAT***



Size: 5, 6, 8, 10 inch      Grid: No.1, No.2, No.BE

By adopting the original resin bond, this pad made it possible to polish a point with excellent cutting force and long life. Polish the stone with the regular pad up to the step #800, and then use Super Flat for the last 3 steps. It can save time and meantime, you can obtain the natural shine.

## ***SUPER ELITE***



Size: 4, 5, 6, 8, 10 inch

Super Elite is a polishing pad to use before the final polishing process. It covers all steps from #1500 to #3000, and from #2000 to #5000. You can save time of the final buff polishing and also keep the stone luster longer. Using Super Fine together, you can keep the beauty of the stone longer. This product is used most in Japanese factories at the final process before buffing.

## ***SUPER FINE***

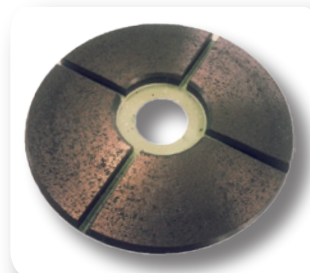


Size: 4, 5, 6, 8, 10 inch

Different from buffing, Super Fine is a polishing pad for the final step using water. Since water is used in polishing, Super Fine can provide you the natural shine of the stone and its shine lasts longer than buffing.

Using with Super Elite, you can obtain the product's characteristics the most. You can use Super Fine like Buff, however, it is best to polish using water.

## ***SUPER SHINE(BUFF)***



Size: 6, 7, 8, inch

This is the first buff developed in Japan. The main characteristic of this product is to enable finishing with most natural color. This is the best buff for various colors of stone such as white, blue, red and so on.

It can be used with hand and automatic polisher.

# **TOUEI INC.**

from **JAPAN** to you

Head Office      4-5-25 Wakaenishishinmachi, Higashiosaka-City, Osaka, Japan

TEL : +81-06-6725-5236 FAX : +81-06-6725-3366